

## MULTI POSITION ELECTRIC (50 HZ) AIRHANDLER 1 1/2 TON – 5 TON

### Description / Application

- "A" Series Indoor Electrical Airhandler is Designed to be located in the closet, utility room, attic, crawl space or basement.
- Compact, versatile upflow, right or left horizontal, and counterflow multi-position.

### Cabinet Construction

- Insulated steel cabinet.

### Cabinet Finish

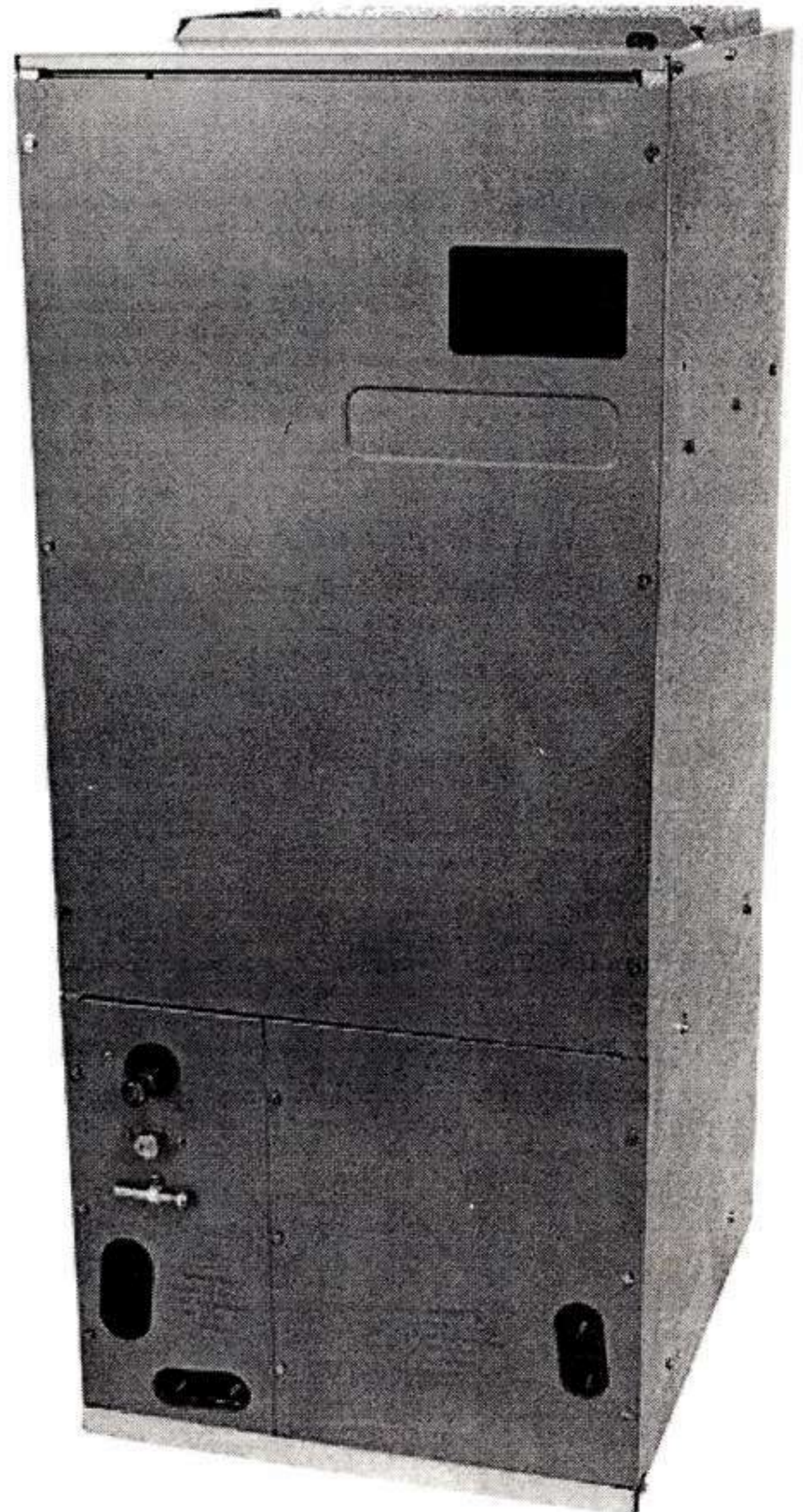
- G90 galvanized stucco finish with painted front panels.

### Standard Equipment

- Fully insulated cabinet.
- Direct drive multi-speed motor to permit air volume variation for heating & cooling application needs.
- Equipped with a check flowrater for Heat Pump and Cooling Unit Operation.
- Built-in coil with horizontal & vertical thermoplastic drain pans with secondary drains.
- Built-in filter provision.
- Copper Tube – Aluminum Fin Coils.
- Power supply entry at top.
- Low voltage entry on left side and top.
- Transformer and blower time delay on all units.

### Accessories

- Pre-tested, pre-wired heat kits in 3, 5, 6, 8, 10, 15, 20 kw, 1 phase models. Featuring: electric heat limit control, rust resistant nickel chromium heating elements, and select models having circuit breakers.
- Permanent washable plastic airfilters. Part numbers; FIL18-32, FIL36-42, AND FIL48-61.





**ELECTRICAL DATA**

Model No.	Single Supply Circuit		Min. VAC	Max VAC	Blower Motor	
	Minimum Ampacity @220/240V	Maximum Overcurrent Prot. Amps @220/240V			FLA	HP
A36-00-2R	1.8/1.8	15/15	198	264	1.4	1/4
A48-00-2R	1.8/1.8	15/15	198	264	1.4	1/4
A60-00-2R	4.3/4.3	15/15	198	264	3.4	3/4

**PHYSICAL DATA**

Blower		Coil Drain Conn	Refrigerant Connection		Approx. Shipping Weight
Dia.	Width	FPT	Liq.	Suct.	
9 1/2 [24.1]	6 [15.2]	3/4 [1.9]	3/8 [.95]	3/4 [1.9]	106 [48.0]
9 1/2 [24.1]	8 [20.5]	3/4 [1.9]	3/8 [.95]	3/4 [1.9]	141 [63.9]
9 1/2 [24.1]	8 [20.5]	3/4 [1.9]	3/8 [.95]	7/8 [2.2]	173 [78.4]
10 5/8 [26.9]	10 5/8 [26.9]	3/4 [1.9]	3/8 [.95]	7/8 [2.2]	192 [87.0]

[ ] DESIGNATES METRIC EQUIVALENTS IN CENTIMETERS AND KILOGRAMS

**BLOWER PERFORMANCE**

Model	Speed	Airflow Delivered Against External Static Pressure				
		.1[2.5]	.2[5.0]	.3[7.5]	.4[10.0]	.5[12.5]
		A24-00-2R	HIGH LOW	960[453] 810[382]	930[439] 780[368]	890[420] 760[358]
A36-00-2R	HIGH LOW	1450[685] 1260[595]	1415[668] 1240[585]	1360[642] 1200[566]	1280[604] 1145[541]	1200[567] 1060[500]
A48-00-2R	HIGH LOW	1670[789] 1310[619]	1610[760] 1300[614]	1500[708] 1290[609]	1440[680] 1280[604]	1370[647] 1260[595]
A60-00-2R	HIGH LOW	2170[1025] 1900[897]	2080[982] 1810[855]	2000[944] 1700[803]	1920[907] 1590[751]	1850[874] 1500[708]

**PERFORMANCE RATINGS**

Model No.	Capacity (TONS) Nominal (Cooling)	Seasonal Efficiency AFUE%
A24-00-2R	2	100.0
A36-00-2R	3	100.0
A48-00-2R	4	100.0
A60-00-2R	5	100.0

Dry coil with Filter in Place

SCFM Correction for Wet Coil - 4%.

[ ] DESIGNATES METRIC EQUIVALENTS

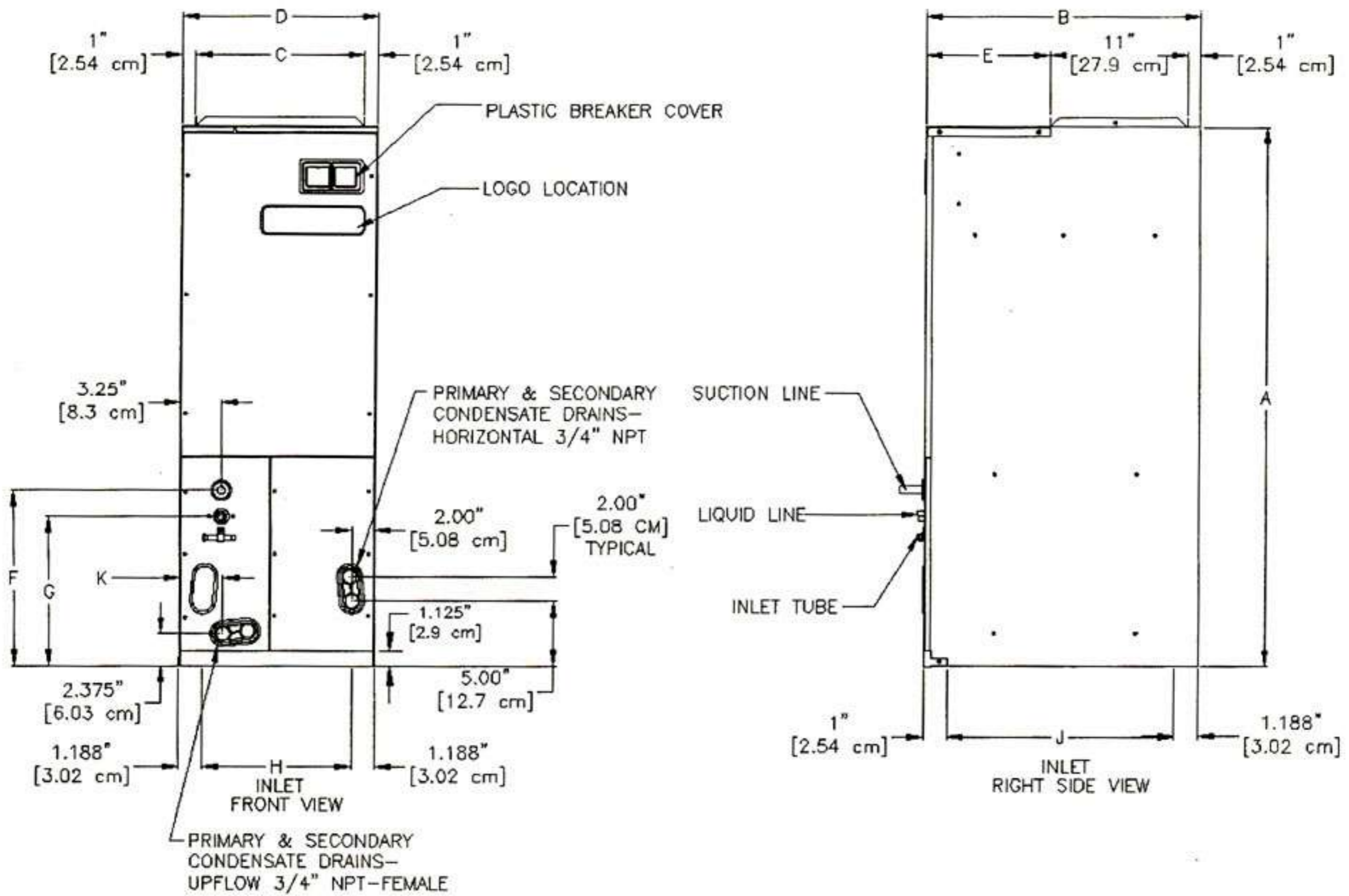
**Heater Kit application options**

	A24-00-2R	A36-00-2R	A48-00-2R	A60-00-2R
HKR-03	X	X	X	X
HKR-05(c)	X	X	X	X
HKR-06	X	X	X	X
HKR-08(c)	X	X	X	X
HKR-10(c)	X	X	X	X
HKR-15C		X	X	X
HKR-20C		X	X	X

(c) circuit breakers optional



PHYSICAL DIMENSIONS (See fig. Below)



Base Model #	A	B	C	D	E	F	G	H	J	K
A24-002-2R	41.125 [107.0 cm]	22 [55.9 cm]	13.5 [34.3 cm]	15.5 [39.4 cm]	10 [25.4 cm]	13.375 [34.0 cm]	10.811 [27.5 cm]	13.125 [33.3 cm]	19.812 [50.3 cm]	3.563 [9.05CM]
A36-00-2R	46.75 [118.7 cm]	22 [55.9 cm]	17.5 [44.5 cm]	19.5 [49.5 cm]	10 [25.4 cm]	13.375 [34.0 cm]	10.811 [27.5 cm]	17.125 [43.5 cm]	19.812 [50.3 cm]	3.563 [9.05CM]
A48-00-2R A60-00-2R	53.25 [135.3 cm]	24 [61.0 cm]	20 [50.8 cm]	22 [55.9 cm]	12 [30.5 cm]	14.5 [36.8 cm]	11.935 [30.3 cm]	19.625 [49.8 cm]	21.812 [55.4 cm]	3.343 [8.49CM]

[ ] DESIGNATES METRIC EQUIVALENTS

NOTE: SPECIFICATIONS AND PERFORMANCE DATA LISTED HEREIN ARE SUBJECT TO CHANGE WITHOUT NOTICE.