

FCZ

Fan coils Universal and floor installation



Aermec is participating in the EUROVENT Program : FCH The related products can be found at the website www.eurovent-certification.com

Variable Multi Flow®

VMF



FCZ_D Dualjet



FCZ_A



Programming via smart devices using Therm App

Electronic T-Touch controller



FCZ_U

- **EXTREMELY SILENT OPERATION**
- **ADVANCED CONTROLLER ALLOWING PROGRAMMING VIA SMART DEVICES**
- **DUALJET VERSION FOR HIGHEST FOUR-SEASON COMFORT**

Features

Drawing from its wide experience in the field of fan coils, Aermec presents the new FCZ series: elegant design goes hand in hand with low noise and notable energy savings.

FCZ can be installed in any 2/4 pipe system and operates with any heat generator even at low temperatures. Thanks to numerous configurations and models Aermec offers the ideal solution for any need.

Versions

Without installed controller,

Vertical or horizontal installation:

FCZ_U
FCZ_UA

Vertical installation:

FCZ_DS
FCZ_AS

With installed controller

Vertical installation:

FCZ_D
FCZ_A
FCZ_ACT
FCZ_APC

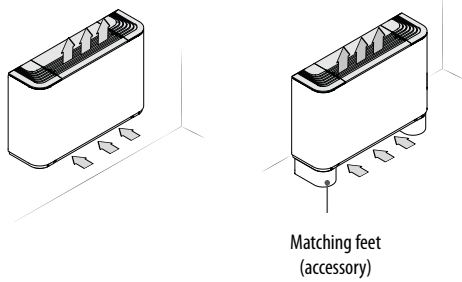
- housing RAL9003, grille/feet RAL 7047
- 3-speed fan.
- Electric motors with permanently inserted condensers
- Metallic protective cabinet with rustproofing polyester paint
- Adjustable air distribution grille (U version)
- Automatic power-off function with closure of the air delivery grille, (U version)
- Low pressure drop coil
- Easy installation and maintenance
- G2 air filter for all versions. **APC versions equipped with Plasmacluster purifier**
- Extractable shrouds for easy, effective cleaning
- The hydraulic connections can be inverted


during installation (only valid for units with a single coil, those with a supplementary coil cannot be inverted).

- **The ThermApp application (applicable with T-TOUCH controller) operates by simply placing a smart device on the fan coil. The App allows working mode and time schedule programming, sleep mode activation, alarm listing, etc. ThermApp is available for Android Operating Systems.**

Configurations available

With fixed grille (vertical free-standing) - A

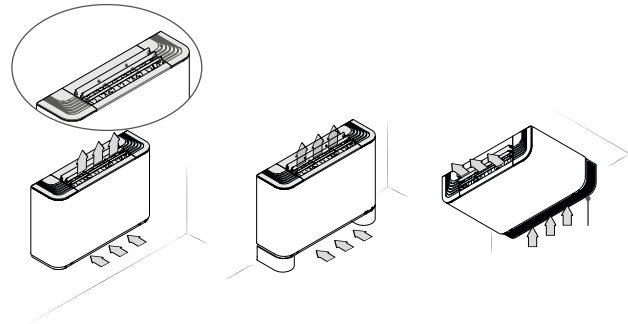


- **FCZ_A**
- With switch
- **FCZ_AS**
- Without installed controller
- Compatible with VMF system
- **FCZ_ACT**
- With electronic controller (for 2 pipe systems)
- **FCZ_APC** 
- With electronic controller (for 2 pipe systems)
- with Plasmacluster purifier

Vertical installation only
- For 2/4 pipe systems

With adjustable/fixed grille (Universal) - U

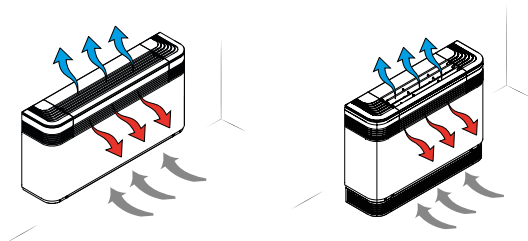
With adjustable air distribution grille - U



- **FCZ_U**
- Without installed controller
- Compatible with VMF system
- Adjustable grille
 Single for size 1-2-3
 Three independent for sizes 4-5-6-7-8
- With the flap completely closed the unit is off**

Vertical or horizontal installation
- For 2/4 pipe systems

With double flow (Dualjet) - D



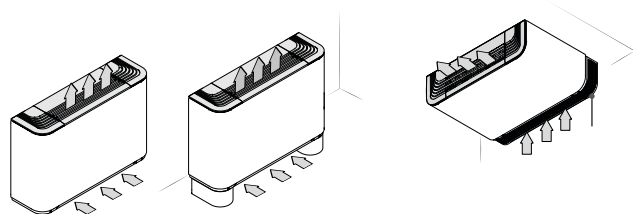
Dualjet, unique to Aermec, offers notably improved seasonal comfort by directing the air flow according to the season. In winter warm air is directed towards the floor; in summer cool air is directed towards the ceiling.

- **FCZ_D** With installed controller
- **FCZ_DS** Without installed controller

FCZ_DS units are compatible with the T-TOUCH controller and VMF system, (contact Aermec for further details)
- The air supply orientation (frontal or top) is adjusted by acting directly on the grille.

Vertical installation only
- For 2 pipe system (4 pipe system with VCF_X4, VMF system or T-TOUCH)

With fixed air distribution grille - UA



- **FCZ_UA**
- Without installed controller
- Compatible with VMF system
- Fixed grille

Vertical or horizontal installation
- For 2/4 pipe systems

Unit selection

By appropriately combining the variety of options available, each model can be configured in order to meet all specific system requirements.

Field	Code	7,8	Versions
1,2,3	FCZ		D Dualjet with installed controller
4	Size		DS Dualjet without installed controller
	1-2-3-4-5-6-7-8-9-10		A Free standing with switch
5	Main coil		AS Free standing without switch
	0 Standard		ACT Free standing with electronic controller
	5 Oversized (1)		APC Free standing, electronic controller and Plasmacluster purifier
6	Supplementary coil		U Universal with adjustable grille, without installed controller
	0 Without coil		UA Universal with fixed grille without installed controller
	1 Standard		
	2 Oversized		

(1) Oversized coil "5" does not allow the installation of the supplementary coil "1 or 2"

Size available by version

Versions	Size available with main coil only (2 pipes)																			
FCZ	100	150	200	250	300	350	400	450	500	550	600	650	700	750	800	850	900	950	1000	
A	•	•	•	•	•	•	•	•	•	•	•	•	•	•	•	•	•	•	•	
AS	•	•	•	•	•	•	•	•	•	•	•	•	•	•	•	•	•	•	•	
ACT	•	•	•	•	•	•	•	•	•	•	•	•	•	•	•	•	•	•	•	
APC	•	•	•	•	•	•	•	•	•	•	•	•	•	•	•	•	•	•	•	
U	•	•	•	•	•	•	•	•	•	•	•	•	•	•	•	•	•	•	•	
UA	•	•	•	•	•	•	•	•	•	•	•	•	•	•	•	•	•	•	•	
D	/	/	•	/	•	/	•	/	•	/	/	/	/	/	/	/	/	/	/	
DS	/	/	•	/	•	/	•	/	•	/	/	/	/	/	/	/	/	/	/	

Versions	Size available with main and supplementary coil (4 pipes)																			
FCZ	101	102	201	202	301	302	401	402	501	502	601	602	701	702	801	802	901	1001		
A	•	•	•	•	•	•	•	•	•	•	•	•	•	•	•	•	•	•		
AS	•	•	•	•	•	•	•	•	•	•	•	•	•	•	•	•	•	•		
ACT	/	/	/	/	/	/	/	/	/	/	/	/	/	/	/	/	/	/		
APC	/	/	/	/	/	/	/	/	/	/	/	/	/	/	/	/	/	/		
U	•	•	•	•	•	•	•	•	•	•	•	•	•	•	•	•	•	•		
UA	•	•	•	•	•	•	•	•	•	•	•	•	•	•	•	•	•	•		
D	/	/	/	/	/	/	/	/	/	/	/	/	/	/	/	/	/	/		
DS	/	/	/	/	/	/	/	/	/	/	/	/	/	/	/	/	/	/		

Accessories

Control Panel

- T-TOUCH:** Touch controller mounted on-board. allows remote control with (Android) smart devices using the ThermApp application.

A range of dedicated controllers, wall-mounted or on the machine, is available but it is essential to choose between these panels for simple and complete tuning, for more details please refer to the dedicated sheet.

Probes and accessories for control panels

- SW3:** water temperature probe allowing automatic season change on electronic controllers supplied with water-side change over
- SWA:** external probe accessory (length = 6m). The probe detects the temperature of the ambient air if connected to the connector (A) on panel FMT21; the ambient air temperature probe incorporated in the panel is automatically deactivated. Detects the temperature of the water in the system, for ventilation consent, if connected to the connector (W) of the FMT21 panel. Two SWA probes can be simultaneously connected to the panel FMT21.
- SIT 3 - 5:** Thermostat Interface Card allowing the creation of a network of fan coils (max. 10) commanded by a central control panel (selector or thermostat). SIT3: commands the 3 fan speeds and must be installed on each fan coil within the network; receives the commands from the selector or the SIT5 card. SIT5: commands the 3 fan speeds and up to 2 valves (four pipe systems); sends the thermostat's commands to the fan coil network.

VMF system

- VMF-E0:** thermostat accessory to be mounted on the side of the fancoil, equipped with air and water sensors as standard; controls 2 pipe, 4 pipe, 2 pipe + Plasmacluster, 2 pipe + UV lamps, 2 pipe + electrical heater systems. Equipped with external contact to be

used as low voltage remote ON-OFF. This thermostat can create a single fancoil zone through 2-wire serial communication (1 master + maximum 5 slaves). The thermostat is fuse protected.

- VMF-E2Z:** User interface for mounting on the unit with two selectors: one to control the temperature and one for the speed.
- VMF-E4:** Wall mounted user interface allowing control via a capacitive touch keyboard.
- VMF-E5:** Wall recessed panel allowing control of a complete hydronic system via a capacitive touch keyboard.
- VMF-E1:** Thermostat for serial communication.
- VMF-SW:** Water sensor replacing that supplied with VMF-E1 thermostats for installation upstream of the valve.
- VMF-SW1:** Additional water sensor for 4-pipe systems with E1 thermostats offering maximum control in the cooling range.

Hot water coil

- BV:** Single row hot water heat exchanger. Not available for versions with Plasmacluster.

Electrical heater

- RX:** Armoured electrical coil with safety thermostat (requires a thermostat with heater management). Not available for 4-row or Plasmacluster versions

Valve kit

- VCZ_X4:** Valve kits for single coil units, installed in 4 pipe systems with totally separated "Cooling" and "Heating" circuits. The kit consists of 2 valves with 3-way 4 port connection complete with electro-thermal actuators, insulating shells for the valves and associated hydraulic piping. The VCF1X4L valve kit allows left side connection.
- VCZ or VCF:** kit containing a motorised 3-way valve with insulating shell plus coupling and pipes in insulated copper. Applicable for standard or oversized main coil. Available with 230V and 24V~50Hz power supply.

- VCZD or VCFD:** Kit consisting of powered 2-way valve, copper couplings and pipes applicable for standard or oversized main coil. Available with 230V and 24V~50Hz power supply.

- VJP/VJP_M:** Control and balancing combination valve for 2 and 4 pipe systems to install outside the unit, supplied without fittings and hydraulic components. The valve, which can guarantee a constant water flow rate in the terminal, within its operating range, is available with 230V and 24V~50Hz power supply.

The VJP is controlled by on-off logic with compatible control panels (accessories)

The VJP_M is controlled by modulating logic with panels not supplied by Aermec

The design water flow rate is crucial to refine the selection of the valve shown in the compatibility table.

Installation accessoires

- AMP:** Wall mounting kit.
- DSC4:** Condensate drainage device applied where natural run-off is not possible.
- BCZ:** Drip tray
- GA:** Grille to hide hydraulics and electrics on ceiling mounted units; also applicable for floor installation.
- PCZ:** Sheet metal panel to close rear of unit
- ZXZ:** Mounting feet (set of 2).

Refer to dedicated product Leaflet for further details concerning control panel and VMF System.

Compatibility of accessories

FCZ		Single coil model																		
		100	150	200	250	300	350	400	450	500	550	600	650	700	750	800	850	900	950	1000
Probes and accessories for control panels																				
T-TOUCH	AS-U-UA-DS	•	•	•	•	•	•	•	•	•	•	•	•	•	•	•	•	•	•	•
KTLM	AS-U-UA	•	•	•	•	•	•	•	•	•	•	*	*	*	*	*	*	•	•	•
PTINZ	AS-U-UA-DS	•	•	•	•	•	•	•	•	•	•	•	•	•	•	•	•	•	•	•
PX-PX2-PX2C6	AS-U-UA	(1)	•	•	•	•	•	•	•	•	•	•	•	•	•	•	•	•	•	•
PXAE-PXAR	AS-U-UA	•	•	•	•	•	•	•	•	•	•	•	•	•	•	•	•	•	•	•
TPF	AS-U-UA	•	•	•	•	•	•	•	•	•	•	•	•	•	•	•	•	•	•	•
WMT05-06-10	AS-U-UA	•	•	•	•	•	•	•	•	•	•	•	•	•	•	•	•	•	•	•
TPFW	AS-U-UA	•	•	•	•	•	•	•	•	•	•	•	•	•	•	•	•	•	•	•
SW3	AS-U-UA	In combination with PXAE or PXAR																		
SIT3	AS-U-UA	In combination with TPFW or PXAE or PXAR or PX2 or PX or PX2C6 WMT05-06-10																		
SIT5	AS-U-UA	In combination with TPFW or PXAE or PXAR																		
VMF System																				
VMF-E0	AS-U-UA-DS*	•	•	•	•	•	•	•	•	•	•	•	•	•	•	•	•	•	•	•
VMF-E1	AS-U-UA-DS*	•	•	•	•	•	•	•	•	•	•	•	•	•	•	•	•	•	•	•
VMF-E2Z	AS-U-UA	•	•	•	•	•	•	•	•	•	•	•	•	•	•	•	•	•	•	•
VMF-E4	AS-U-UA	•	•	•	•	•	•	•	•	•	•	•	•	•	•	•	•	•	•	•
VMF-E5	AS-U-UA	•	•	•	•	•	•	•	•	•	•	•	•	•	•	•	•	•	•	•
VMF-SW	AS-U-UA	•	•	•	•	•	•	•	•	•	•	•	•	•	•	•	•	•	•	•
VMF-SW1	AS-U-UA	•	•	•	•	•	•	•	•	•	•	•	•	•	•	•	•	•	•	•
Additional coil (heating only)																				
BV117	A-AS-U-UA	•																		
BV122	A-AS-U-UA			•																
BV132	A-AS-U-UA				•															
BV142	A-AS-U-UA							•		•										
BVZ800	A-AS-U-UA											•		•		•				
BV162	A-AS-U-UA																	•		•
Electrical Heat Exchanger																				
RX17	AS-U-UA	•																		
RX22	AS-U-UA			•																
RX32	AS-U-UA				•															
RX42	AS-U-UA							•												
RX52	AS-U-UA									•										
RXZ800	AS-U-UA											•		•		•				
RX62	AS-U-UA																	•		•
Water valves **																				
Valve Kit for 4 pipe systems with main coil																				
VCZ1X4L-R	AS-U-UA (DS+sist. VMF or T-TOUCH)	•	•	•	•															
VCZ2X4L-R	AS-U-UA (DS+sist. VMF or T-TOUCH)				•	•	•	•	•	•	•	•	•	•	•	•				
VCZ3X4L-R	AS-U-UA (DS+sist. VMF or T-TOUCH)																	•	•	•
3 way valve kit																				
VCZ41/4124	AS-ACT-APC-U-UA-D-DS (2)	•	•	•	•															
VCZ42/4224	AS-ACT-APC-U-UA-D-DS (2)				•	•	•	•	•	•	•	•	•	•	•	•				
VCZ43/4324	AS-ACT-APC-U-UA-D-DS (2)																	•	•	•
2 way valve kit																				
VCZD1/124	AS-ACT-APC-U-UA-D-DS (2)	•	•	•	•															
VCZD2/224	AS-ACT-APC-U-UA-D-DS (2)				•	•	•	•	•	•	•	•	•	•	•	•				
VCZD3/324	AS-ACT-APC-U-UA-D-DS (2)																	•	•	•
Combined adjustment and balancing valve independent of pressure																				
VJP060	AS-ACT-APC-U-UA-D-DS	•	•	•	•	•	•													
VJP090	AS-ACT-APC-U-UA-D-DS							•	•	•	•	•	•							
VJP150	AS-ACT-APC-U-UA-D-DS											•	•	•	•	•	•	•	•	•
VJP060M	AS-ACT-APC-U-UA-D-DS (2)	•	•	•	•	•	•													
VJP090M	AS-ACT-APC-U-UA-D-DS (2)							•	•	•	•	•	•	•						
VJP150M	AS-ACT-APC-U-UA-D-DS (2)											•	•	•	•	•	•	•	•	•
Installation accessories																				
AMP20	U-UA	•	•	•	•	•	•	•	•	•	•	•	•	•	•	•	•	•	•	•
AMPZ	U-UA	•	•	•	•	•	•	•	•	•	•	•	•	•	•	•	•	•	•	•
DSC4	All	(3)	•	•	•	•	•	•	•	•	•	•	•	•	•	•	•	•	•	•
BCZ4	(Inst. vertical)	•	•	•	•	•	•	•	•	•	•	•	•	•	•	•	•	•	•	•
BCZ5	(Inst. horizontal)	•	•	•	•	•	•	•	•	•	•	•	•	•	•	•	•	•	•	•
BCZ9	(Inst. horizontal)																	•	•	•

For further details concerning control panels and VMF system refer to the dedicated sheets.

* Contact Aermec

**The water valves can be combined with the unit if it is also provided a control panel that controls

PTINZ e PX2Z **Only for wall installation**

(1) **Only for wall installation;** PX2C6 panel PX2 in multiples of 6

(2) VCZ4124-VCZ4224-VCZ4324-VCZD124-VCZD224-VCZD324-VJP60M-VJP090M-VJP150M are 24V

(3) DSC4 is not available with AMPZ

Compatibility of accessories

FCZ		Single coil model																		
		100	150	200	250	300	350	400	450	500	550	600	650	700	750	800	850	900	950	1000
Panel to close rear of unit																				
PCZ100	All	•	•																	
PCZ200	All			•	•															
PCZ300	All					•	•													
PCZ500	All							•	•	•	•									
PCZ800	All											•	•	•	•	•	•			
PCZ1000	All																•	•	•	•
Grille for ceiling mounted units																				
GA100	U-UA	•	•																	
GA200	U-UA			•	•															
GA300	U-UA					•	•													
GA500	U-UA							•	•	•	•									
GA800	U-UA											•	•	•	•	•	•	•	•	•
Mounting feet																				
ZXZ		•	•	•	•	•	•	•	•	•	•	•	•	•	•	•	•	•	•	•

FCZ		Twin coil models																		
		101	102	201	202	301	302	401	402	501	502	601	602	701	702	801	802	901	1001	
Probes and accessories for control panels																				
T-TOUCH	AS-U-UA	•	•	•	•	•	•	•	•	•	•	•	•	•	•	•	•	•	•	•
KTLM	AS-U-UA	•	•	•	•	•	•	•	•	•	•	*	*	*	*	*	*	*	*	*
TPF	AS-U-UA	•	•	•	•	•	•	•	•	•	•	•	•	•	•	•	•	•	•	•
WMT06-10	AS-U-UA	•	•	•	•	•	•	•	•	•	•	•	•	•	•	•	•	•	•	•
TPFW	AS-U-UA	•	•	•	•	•	•	•	•	•	•	•	•	•	•	•	•	•	•	•
VMF System																				
VMF-E0	AS-U-UA	•	•	•	•	•	•	•	•	•	•	•	•	•	•	•	•	•	•	•
VMF-E1	AS-U-UA	•	•	•	•	•	•	•	•	•	•	•	•	•	•	•	•	•	•	•
VMF-E2Z	AS-U-UA	•	•	•	•	•	•	•	•	•	•	•	•	•	•	•	•	•	•	•
VMF-E4	AS-U-UA	•	•	•	•	•	•	•	•	•	•	•	•	•	•	•	•	•	•	•
VMF-E5	AS-U-UA	•	•	•	•	•	•	•	•	•	•	•	•	•	•	•	•	•	•	•
VMF-SW	AS-U-UA	•	•	•	•	•	•	•	•	•	•	•	•	•	•	•	•	•	•	•
VMF-SW1	AS-U-UA	•	•	•	•	•	•	•	•	•	•	•	•	•	•	•	•	•	•	•
Water valves **																				
3 way valve kit																				
VCZ41/4124	AS-U-UA	(2)	•	•	•	•														
VCZ42/4224	AS-U-UA	(2)				•	•	•	•	•	•									
VCZ43/4324	AS-U-UA	(2)										•	•	•	•	•	•	•	•	•
2 way valve kit																				
VCZD1/124	AS-U-UA	(2)	•	•	•	•														
VCZD2/224	AS-U-UA	(2)				•	•	•	•	•	•									
VCZD3/324	AS-U-UA	(2)										•	•	•	•	•	•	•	•	•
3 way valve kit for heating coil only																				
VCF44/4424	AS-U-UA		•	•	•	•	•	•	•	•	•	•	•	•	•	•	•	•	•	•
VCF45/4524	AS-U-UA																			•
2 way valve kit for heating coil only																				
VCFD4/424	AS-U-UA		•	•	•	•	•	•	•	•	•	•	•	•	•	•	•	•	•	•
Combined adjustment and balancing valve independent of pressure																				
VJP060	AS-U-UA		•	•	•	•	•													
VJP090	AS-U-UA							•	•	•	•	•								
VJP150	AS-U-UA											•	•	•	•	•	•	•	•	•
VJP060M	AS-U-UA	(2)	•	•	•	•	•													
VJP090M	AS-U-UA	(2)						•	•	•	•	•								
VJP150M	AS-U-UA	(2)										•	•	•	•	•	•	•	•	•
Installation accessories																				
AMP20	U-UA		•	•	•	•	•	•	•	•	•									
AMPZ	U-UA		•	•	•	•	•	•	•	•	•	•	•	•	•	•	•	•	•	•
DSC4	All	(3)	•	•	•	•	•	•	•	•	•	•	•	•	•	•	•	•	•	•
BCZ4	(Inst. vertical)		•	•	•	•	•	•	•	•	•	•	•	•	•	•	•	•	•	•
BCZ5	(Inst. horizontal)		•	•	•	•	•	•	•	•	•	•	•	•	•	•	•	•	•	•
BCZ9	(Inst. horizontal)																			•
Panel to close rear of unit																				
PCZ100	All	•	•																	
PCZ200	All			•	•															
PCZ300	All					•	•													
PCZ500	All							•	•	•	•									
PCZ800	All											•	•	•	•	•	•	•	•	•
PCZ1000	All																			•

For further details concerning control panels and VMF system refer to the dedicated sheets.

* Contact Aermec

**The water valves can be combined with the unit if it is also provided a control panel that controls

VJP / VJP_M The compatibility of the valves in the hot branch plant 4 tubes, check with the design water flow

(2) VCZ4124-VCZ4224-VCZ4324-VCZD124-VCZD224-VCZD324-VJP60M-VJP090M-VJP150M are 24V

(3) DSC4 is not available with AMPZ

Compatibility of accessories

Grille for ceiling mounted units																			
GA100	U-UA	•	•																
GA200	U-UA			•	•														
GA300	U-UA						•	•											
GA500	U-UA									•	•	•	•						
GA800	U-UA													•	•	•	•	•	•
Mounting feet																			
ZXZ	All	•	•	•	•	•	•	•	•	•	•	•	•	•	•	•	•	•	•

Technical data - unit with single coil

FCZ	100			150			200			250			300			350			400			450			500			550			
	H	M	L	H	M	L	H	M	L	H	M	L	H	M	L	H	M	L	H	M	L	H	M	L	H	M	L	H	M	L	
Fan speed																															
Heating Performance																															
2 pipe systems																															
Heating capacity (70°C)	(1)	kW																													
Water flow rate	(1)	l/h																													
Pressure drop	(1)	kPa																													
Heating capacity (45°C)	(2)	kW																													
Water flow rate	(2)	l/h																													
Pressure drop	(2)	kPa																													
Cooling Performance																															
Total cooling capacity	(3)	kW																													
Sensible cooling capacity	(3)	kW																													
Cooling capacity (latent)	(3)	kW																													
Water flow rate	(3)	l/h																													
Pressure drop	(3)	kPa																													
Fans																															
Centrifugal Fans	n°	1						1						2						2						2					
Air flow rate	m³/h	200	160	110	200	160	110	290	220	140	290	220	140	450	350	260	450	350	260	600	460	330	600	460	330	720	600	400	720	600	400
Sound level																															
Sound power level	(4)	dB(A)																													
Sound pressure level		dB(A)																													
Hydraulic connections																															
Main coil																															
Standard	Ø	1/2"																													
Oversized	Ø	/																													
Electrical data																															
Absorbed power	W	35 29 19 35 29 19 33 29 25 33 29 25 44 33 25 44 33 25 57 43 30 57 43 30 76 52 38 76 52 38																													
Connected for speeds		V3 V2 V1 V3 V2 V1 V3 V2 V1 V3 V2 V1 V3 V2 V1 V3 V2 V1 V3 V2 V1 V3 V2 V1 V3 V2 V1 V3 V2 V1 V3 V2 V1																													
Power supply		230V~50Hz																													

FCZ	600			650			700			750			800			850			900			950			1000						
	H	M	L	H	M	L	H	M	L	H	M	L	H	M	L	H	M	L	H	M	L	H	M	L	H	M	L				
Fan speed																															
Heating Performance																															
2 pipe systems																															
Heating capacity (70°C)	(1)	kW																													
Water flow rate	(1)	l/h																													
Pressure drop	(1)	kPa																													
Heating capacity (45°C)	(2)	kW																													
Water flow rate	(2)	l/h																													
Pressure drop	(2)	kPa																													
Cooling Performance																															
Total cooling capacity	(3)	kW																													
Sensible cooling capacity	(3)	kW																													
Cooling capacity (latent)	(3)	kW																													
Water flow rate	(3)	l/h																													
Pressure drop	(3)	kPa																													
Fans																															
Fans Centrifugal	n°	3						3						3						3						3					
Air flow rate	m³/h	920	720	520	920	720	520	1140	930	700	1140	930	700	1300	1120	900	1300	1120	900	1140	930	700	1140	930	700	1300	1120	900			
Sound level																															
Sound power level	(4)	dB(A)																													
Sound pressure level		dB(A)																													
Hydraulic connections																															
Main coil																															
Standard	Ø	3/4"																													
Oversized	Ø	/																													
Electrical data																															
Absorbed power	W	91 60 38 91 60 38 106 80 59 106 80 59 131 100 80 131 100 80 106 80 59 106 80 59 131 100 80 131 100 80																													
Connected for speeds		V3 V2 V1 V3 V2 V1 V3 V2 V1 V3 V2 V1 V3 V2 V1 V3 V2 V1 V3 V2 V1 V3 V2 V1 V3 V2 V1 V3 V2 V1 V3 V2 V1																													
Power supply	V/Hz	230V~50Hz																													

Data in accordance with Regulation EU 2016/2281

H Maximum speed; M Average Speed; L Minimum speed

(1) Room air temperature 20°C d.b.; Water (in/out) 70°C/60°C;

(2) Room air temperature 20°C d.b.; Water (in/out) 45°C/40°C (EUROVENT)

(3) Room air temperature 27°C d.b./19°C w.b.; Water (in/out) 7°C/12°C (EUROVENT)

(4) Sound power level: based on measurement in compliance with Eurovent 8/2

Sound pressure level (A-weighted) measured indoors with volume V=85m³, reverberation time t = 0.5 s; Direction factor Q = 2; Distance r = 2.5m

Technical data - unit with main + supplementary coil

FCZ	101			201			301			401			501			601			701			801			901			1001							
Fan speed	H	M	L	H	M	L	H	M	L	H	M	L	H	M	L	H	M	L	H	M	L	H	M	L	H	M	L	H	M	L	H	M	L		
Heating Performance																																			
4 pipe systems																																			
Heating capacity	(2)	kW	1,17	1,01	0,75	1,60	1,35	1,02	2,56	2,18	1,80	3,12	2,65	2,21	3,73	3,34	2,59	4,36	3,67	2,96	4,94	4,29	3,66	5,35	4,79	4,20	5,72	5,63	4,73	6,08	5,56	4,85			
Water flow rate	(2)	l/h	102	89	65	140	118	89	224	191	158	273	232	186	327	293	227	381	321	259	437	375	320	467	419	368	501	492	414	532	487	424			
Pressure drop	(2)	kPa	4,5	3,5	2,0	10,5	7,5	4,5	30,5	23,0	16,5	8,5	6,5	4,5	10,5	8,5	5,5	16,1	12,0	8,0	18,6	14,5	11,0	24,0	20,0	15,5	12,0	12,0	8,5	16,0	13,5	10,5			
Cooling Performance																																			
Total cooling capacity	(3)	kW	1,00	0,84	0,65	1,60	1,28	0,89	2,65	2,17	1,68	3,60	2,92	2,20	4,25	3,69	2,68	4,65	3,90	3,22	5,50	4,89	3,92	6,10	5,66	4,84	6,91	5,00	4,29	7,62	6,88	5,69			
Sensible cooling capacity	(3)	kW	0,83	0,69	0,51	1,33	1,05	0,71	2,04	1,65	1,26	2,67	2,14	1,59	3,18	2,73	1,94	3,92	3,17	2,56	4,30	3,76	2,99	4,83	4,42	3,72	5,68	3,78	2,97	5,53	5,34	4,42			
Cooling capacity (latent)	(3)	kW	0,17	0,15	0,14	0,27	0,23	0,18	0,61	0,52	0,42	0,93	0,78	0,61	1,07	0,96	0,74	0,73	0,73	0,66	1,20	1,13	0,93	1,27	1,24	1,12	1,23	1,22	1,32	2,09	1,54	1,27			
Water flow rate	(3)	l/h	172	144	112	275	221	153	456	374	289	619	503	379	731	635	461	800	671	554	946	841	675	1049	974	832	1188	860	738	1311	1183	979			
Pressure drop	(3)	kPa	7,0	5,0	4,0	18,0	12,5	6,5	18,0	13,0	8,0	34,0	23,5	14,0	29,0	22,5	13,0	26,0	19,0	14,5	30,0	24,5	16,5	30,0	26,5	20,0	9,5	14,5	9,5	37,3	31,0	22,0			
Fans																																			
Centrifugal fans	n°		1			1			2			2			2			3			3			3			3			3					
Air flow rate	m³/h		200	160	110	290	220	140	450	350	260	600	460	330	720	600	400	920	720	520	1140	930	700	1300	1120	900	1140	930	700	1300	1120	900			
Sound level																																			
Sound power level	(4)	dB(A)	45	38	31	51	46	35	48	41	34	51	44	37	56	51	42	57	51	42	62	57	50	66	61	56	62	57	51	66	61	56			
Sound pressure level		dB(A)	37	30	23	43	38	27	40	33	26	43	36	29	48	43	34	49	43	34	54	49	42	58	53	48	54	49	43	58	53	48			
Hydraulic connections																																			
Main coil	∅		1/2"			1/2"			3/4"			3/4"			3/4"			3/4"			3/4"			3/4"			3/4"			3/4"					
Additional coil	∅		1/2"			1/2"			3/4"			3/4"			1/2"			1/2"			1/2"			1/2"			1/2"			1/2"					
Electrical data																																			
Absorbed power	W		35	29	19	33	29	25	44	33	25	57	43	30	76	52	38	91	60	38	106	80	59	131	100	80	80	80	59	131	100	80			
Connected for speeds			V3	V2	V1	V3	V2	V1	V3	V2	V1	V3	V2	V1	V3	V2	V1	V3	V2	V1	V3	V2	V1	V3	V2	V1	V3	V2	V1	V3	V2	V1	V3	V2	V1
Power supply			230V~50Hz																																

Data in accordance with Regulation EU 2016/2281

H Maximum speed; M Average Speed; L Minimum speed

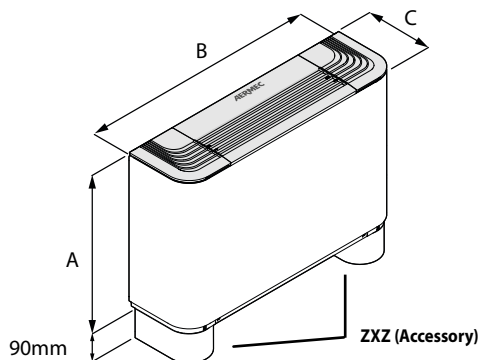
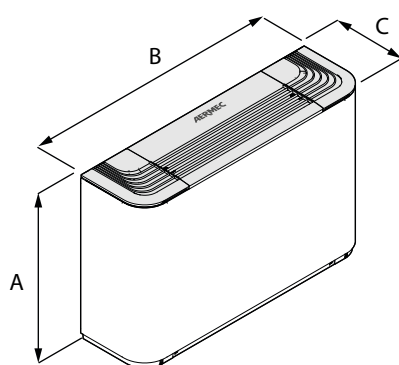
(1) Room air temperature 20°C d.b.; Water (in/out) 70°C/60°C;

(2) Room air temperature 27°C d.b./19°C w.b.; Water (in/out) 7°C/12°C (EUROVENT)

(3) Sound power level: based on measurement in compliance with Eurovent 8/2

Sound pressure level (A-weighted) measured indoors with volume V=85m³, reverberation time t = 0.5 s; Direction factor Q = 2; Distance r = 2.5m

Dimensions and Weights



FCZ		100	101	102	150	200	201	202	250	300	301	302	350	400	401	402	450	500	501	502	550
Dimensions for all versions																					
A	mm	486				486				486				486				486			
A (with feet)	mm	576				576				576				576				576			
B	mm	640				750				980				1200				1200			
C	mm	220				220				220				220				220			
Weight without feet	kg	13	14	14	14	15	15	16	16	17	18	19	19	23	23	24	24	22	23	24	24
FCZ																					
Dimensions for all versions																					
A	mm	486				486				486				591				591			
A (with feet)	mm	576				576				576				681				681			
B	mm	1320				1320				1320				1320				1320			
C	mm	220				220				220				220				220			
Weight without feet	kg	29	31	33	33	29	31	33	33	29	29	31	33	34				34			